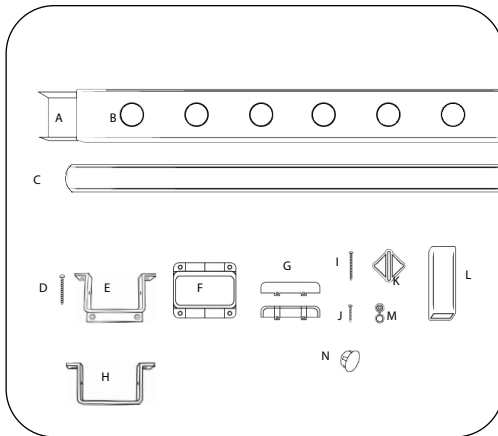


# Instructions for Florence Drink Rail | Straight Rail



MADE IN THE USA

## Component List:

- |   |   |
|---|---|
| A) Aluminum Insert - 2                        | J) $\frac{3}{4}$ " x #6 Self Drilling Rail Screw - 16 |
| B) Vinyl Bottom Rail - 2                      | K) Bottom Support Block Plug - 1                      |
| C) Baluster - count varies                    | L) Bottom Support Block - 1                           |
| D) $1\frac{1}{2}$ " x #8 Bracket Screw - 12   | M) Hinged Screw Cap - 16                              |
| E) Top Mounting Bracket - 2                   | N) Plugs - 4  |
| F) Bottom Mounting Bracket - 2                |   |
| G) Bracket Covers - 4                         |   |
| H) Straps - 4                                 |   |
| I) $1\frac{1}{2}$ " x #8 Brace Plug Screw - 2 |   |

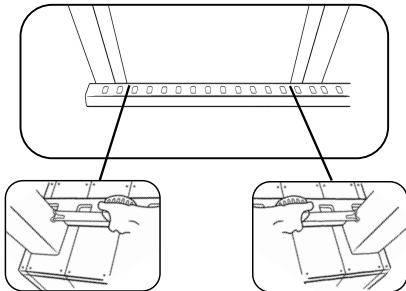
## Tools Required:

- Measuring tape
- Pencil
- Drill
- Phillips drive bit
- #2 Square Drive Bit
- Power miter saw
- 10" 80 tooth carbide blade
- #10 Flat head screws to secure your drink rail
- Always wear safety goggles

Installer is responsible for quality workmanship and meeting all building codes.

- **POST INSTALLATION OPTIONS FOR "OVER-THE-POST"**  
**Cut posts to height of the top rail. DO NOT CUT TOP STAIR RAIL POST**
- **POST INSTALLATION OPTIONS FOR "BETWEEN-THE-POSTS"**  
**Install posts to desired height**

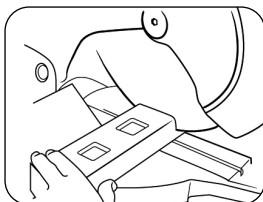
## 1 Measure Bottom Rail



Lay bottom rail in front of post and mark rail for proper cutting on both ends. Measure from post to edge of first routed hole, the spacing should be no less than  $1\frac{3}{4}$ ". This should be done on both ends.

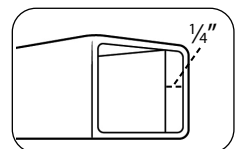
To provide adequate space for bracket. If less than  $1\frac{3}{4}$ " slide rail to left or right to remove a hole. This will allow for balusters to be centered and provide enough space for brackets.

## 2 Cut Bottom Rail

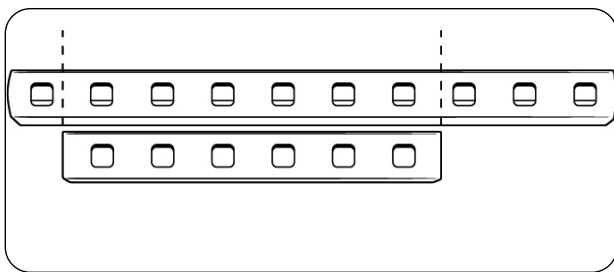


Leave aluminum in while cutting. Make first cut, then slide aluminum  $\frac{1}{4}$ " in from first cut before making second cut.

**ezTIP:** Shortened aluminum prevents aluminum from scratching posts when installing.



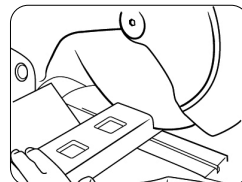
### 3 Cut Top Rail



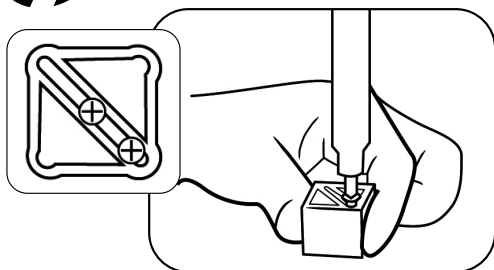
Using the bottom rail as your guide, mark the cuts of the top rail with pencil **exactly** the same as the bottom rail. This will ensure proper alignment after assembly.

Leave aluminum in while cutting. Make first cut, then slide aluminum  $\frac{1}{4}$ " in from first cut before making second cut.

**ezTIP:** Shortened aluminum prevents aluminum from scratching posts when installing.



### 4 Attach Bottom Brace Plug

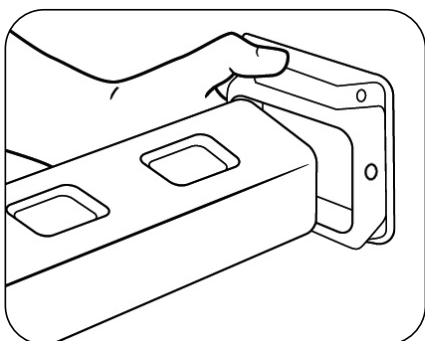


Align plug in center of bottom of the bottom rail.

Attach plug using screws provided. The head of the screw should not be driven below slotted surface of plug.

Slide the brace onto the plug prior to installation of bottom rail.

### 5 Attach Bottom Rail to Post & Insert Balusters



Place rail brackets on ends of bottom rail.

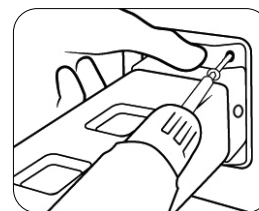
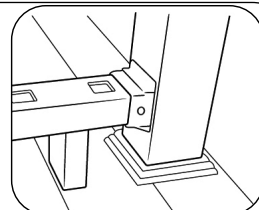
Locking balusters are to be spaced equally along the bottom rail.

Place remaining balusters in bottom rail.

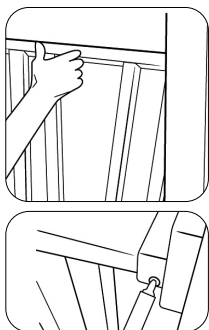
Cut 2 blocks (not included) the same size as the support block. This will support the bottom rail while securing to post.

Attach bracket and rail to post. Apply 4 screws per bracket.

Slightly offset bottom rail ( $\frac{1}{16}$ " ) to start securing brackets. Screws will angle into bracket and then will center as tightened.



### 6 Attach Top Rail to Post



Angle balusters away from you. Starting on one end, insert balusters into top rail.

Once all balusters are inserted, tap top rail down to ensure balusters are all the way in.

Slide rail into position. Be sure aluminum is centered to avoid scratching posts.

Place brackets on ends of top rail.

Screw brackets to post.

Place self-drilling screw through hinge cap. Insert cap and screw into side hole of bracket and secure. Make sure self-drilling screw penetrates both vinyl rail and aluminum insert.

Snap button cap until secure. Repeat on all top and bottom rail brackets.

Install bracket covers onto bottom brackets. Install plugs into top brackets. Attach straps to top rail, 24" maximum spacing. Install drink rail.

